

Contents

CPU Cooler BIRD / Thermal Compounds / Installation Guide

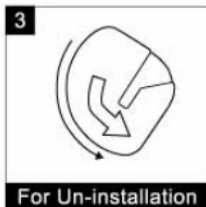
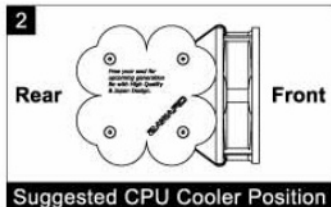
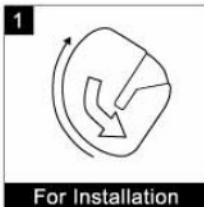
Installation

● Installation

1. Apply about a thin layer of the heatsink compounds on the CPU.
2. Confirm the push pin head positions are ready for the installation.
All the 4 push pins must be turned to end against the arrow. >>>Drawing 1
3. Place the CPU cooler on the CPU. The position as the drawing is suggested to suck in cool air from the front and blow out hot air to the rear. >>>Drawing 2
4. Push the push pins into the mount hole of the mainboard one by one till you hear the clip sound. It is easier to install by minus (-) screw driver.
5. To confirm the CPU cooler is installed properly, try to pull off the push pins.
If the push pins are pulled off without turning push pin head position, the CPU cooler have not been installed properly.
6. Connect the fan connector to the mainboard.

● Un-installation

1. Take off the fan connector from the mainboard.
2. Turn all the 4 push pin heads to the end following the arrow to be ready for the un-installation. >>> Drawing 3
3. Pull all the 4 push pins off from the main board.



Notice

1. Be sure to turned off the computer when the CPU cooler is installed.
2. Confirm if the CPU cooler has been installed properly.
If not, proper performance is not expected.